

Mt. Zion MS4 Annual Facility Inspection Report

April 1, 2022 – March 31, 2023



Prepared by: Chastain & Associates LLC
5 N. Country Club Road | Decatur, IL 62521
P: 217.422.8544 | F: 217.422.0398





Illinois Environmental Protection Agency

Bureau of Water • 1021 N. Grand Avenue E. • P.O. Box 19276 • Springfield • Illinois • 62794-9276

Division of Water Pollution Control ANNUAL FACILITY INSPECTION REPORT

for NPDES Permit for Storm Water Discharges from Separate Storm Sewer Systems (MS4)

This fillable form may be completed online, a copy saved locally, printed and signed before it is submitted to the Compliance Assurance Section at the above address. Complete each section of this report.

Report Period: From March, 2022 To March, 2023

Permit No. ILR40 0394

MS4 OPERATOR INFORMATION: (As it appears on the current permit)

Name: Village of Mt. Zion Mailing Address 1: 1400 Mt. Zion Parkway

Mailing Address 2: _____ County: Macon

City: Mt. Zion State: IL Zip: 62549 Telephone: 217-864-5424

Contact Person: Julie Miller Email Address: j_miller@mtzion.com
(Person responsible for Annual Report)

Name(s) of governmental entity(ies) in which MS4 is located: (As it appears on the current permit)

Macon County

THE FOLLOWING ITEMS MUST BE ADDRESSED.

A. Changes to best management practices (check appropriate BMP change(s) and attach information regarding change(s) to BMP and measurable goals.)

- | | | | |
|--|--------------------------|---|--------------------------|
| 1. Public Education and Outreach | <input type="checkbox"/> | 4. Construction Site Runoff Control | <input type="checkbox"/> |
| 2. Public Participation/Involvement | <input type="checkbox"/> | 5. Post-Construction Runoff Control | <input type="checkbox"/> |
| 3. Illicit Discharge Detection & Elimination | <input type="checkbox"/> | 6. Pollution Prevention/Good Housekeeping | <input type="checkbox"/> |

B. Attach the status of compliance with permit conditions, an assessment of the appropriateness of your identified best management practices and progress towards achieving the statutory goal of reducing the discharge of pollutants to the MEP, and your identified measurable goals for each of the minimum control measures.

C. Attach results of information collected and analyzed, including monitoring data, if any during the reporting period.

D. Attach a summary of the storm water activities you plan to undertake during the next reporting cycle (including an implementation schedule.)

E. Attach notice that you are relying on another government entity to satisfy some of your permit obligations (if applicable).

F. Attach a list of construction projects that your entity has paid for during the reporting period.

Any person who knowingly makes a false, fictitious, or fraudulent material statement, orally or in writing, to the Illinois EPA commits a Class 4 felony. A second or subsequent offense after conviction is a Class 3 felony. (415 ILCS 5/44(h))

Julie Miller
Owner Signature:

Julie Miller

Printed Name:

June 5, 2023
Date:

Village Administrator

Title:

EMAIL COMPLETED FORM TO: epa.ms4annualinsp@illinois.gov

or Mail to: ILLINOIS ENVIRONMENTAL PROTECTION AGENCY
WATER POLLUTION CONTROL
COMPLIANCE ASSURANCE SECTION #19
1021 NORTH GRAND AVENUE EAST
POST OFFICE BOX 19276
SPRINGFIELD, ILLINOIS 62794-9276

VILLAGE OF MT. ZION

April 1, 2022 to March 31, 2023 Annual Facilities Inspection Report (2021 NOI - Year 2)

A. CHANGES TO BMP'S

- 1. No changes to BMPs were proposed during the Reporting Period.

B. COMPLIANCE WITH PERMIT CONDITIONS

C. RESULTS OF INFORMATION COLLECTED AND ANALYZED

D. ACTIVITIES FOR NEXT REPORTING CYCLE (APRIL 1, 2023 TO MARCH 31, 2023)

PUBLIC EDUCATION AND OUTREACH

BMP A.1 – Distributed Paper Material

B. Compliance with Permit Conditions	The Village, as a part of the Macon County MS4 communities, distributed fliers at the Village Hall. See Exhibits A through C for the fliers available.
C. Information Collected and Analyzed	N/A
D. Activities for Next Reporting Cycle	Continue to distribute fliers at Village Hall, distribute to residents at community events.

BMP A.2 – Speaking Engagement

B. Compliance with Permit Conditions	The Village, as a part of the Macon County MS4 communities, hosted a Stormwater Workshop on November 2, 2022. Presenters included Patrick McPartlan, Becky Monreal, Todd Bennett and Kate Johnson. A copy of the agenda is available in Exhibit D.
C. Information Collected and Analyzed	The workshop had 37 attendees.
D. Activities for Next Reporting Cycle	Speak at either one educational workshop or Village Board Meeting to inform public of construction site storm water management efforts. Continue support of Macon County SWCD public engagement.

BMP A.4 – Community Event

B. Compliance with Permit Conditions	The Village, as a part of the Macon County MS4 communities, hosted a Stormwater Workshop on November 2, 2022. Presenters included Patrick McPartlan, Becky Monreal, Todd Bennett and Kate Johnson. A copy of the agenda is available in Exhibit D. In addition, the Village in conjunction with the Macon County Conservation District (MCSWCD) hosted a booth at the 41 st Annual Festival of Spring as part of Earth Day Celebrations on April 23, 2022. A flyer is available in Exhibit E.
C. Information Collected and Analyzed	The workshop had 37 attendees. The number of participants/visitors at the Annual Festival of Spring could not be confirmed (see Exhibit K).

D. Activities for Next Reporting Cycle	Continue partnership with Champaign County to host an educational seminar. Continue support of MCSWCD community events.
--	---

BMP A.6 – Other Public Education

B. Compliance with Permit Conditions	The Village, as part of the Macon County MS4 communities and the MCSWCD, maintained the website for storm water issues (www.maconcleanwater.com).
C. Information Collected and Analyzed	This reporting year, total website visits were unable to be calculated due to technical difficulties (see Exhibit K).
D. Activities for Next Reporting Cycle	Continue to update and maintain the current MS4 Community website and work to increase website visits by 10% in conjunction with the Macon County MS4 Community.

Annual Evaluation Statement: Public Education and Outreach

For the reporting year, the Village met the requirements of the Public Education and Outreach section of the NOI. The annual workshop was held, the MS4 brochures remained available distribution, including Mt. Zion Village Hall, and the website was maintained.

PUBLIC PARTICIPATION / INVOLVEMENT

BMP B.3 – Stakeholder Meeting

B. Compliance with Permit Conditions	The Village attended a local NPDES coordination meeting with other members of the Macon County MS4 community.
C. Information Collected and Analyzed	Meetings were held on the following dates: May 18, 2022 July 20, 2022 September 21, 2022 November 16, 2022 January 18, 2023 February 7, 2023 (Special Meeting) March 15, 2023
D. Activities for Next Reporting Cycle	Continue to attend local NPDES coordination meetings.

BMP B.4 – Public Hearing

B. Compliance with Permit Conditions	No ordinance changes were implemented during the reporting period and therefore no public hearings were required.
C. Information Collected and Analyzed	N/A
D. Activities for Next Reporting Cycle	Continue to review the Storm Water Ordinance and present changes to Village Board for approval.

BMP B.6 – Program Involvement

B. Compliance with Permit Conditions	The Village attended local NPDES coordination meetings with other members of the Macon County MS4 community. The Village offers recycling services to its residents. On June 11, 2022, the Village hosted a one-day curbside pick-up for large
--------------------------------------	---

	<p>items free of charge called Sparkle and Shine. The flyer for this event is available in Exhibit F.</p> <p>In addition, the Macon County Environmental Management agency offered events to all Macon County residents for electronics and paint recycling which ran from April 2, 2022, through September 24, 2022. The flyer is available in Exhibit G.</p>
C. Information Collected and Analyzed	<p>Meetings were held on the following dates:</p> <p>May 18, 2022</p> <p>July 20, 2022</p> <p>September 21, 2022</p> <p>November 16, 2022</p> <p>January 18, 2023</p> <p>February 7, 2023 (Special Meeting)</p> <p>March 15, 2023</p> <p>The number of participants/visitors at the recycling events could not be confirmed.</p>
D. Activities for Next Reporting Cycle	<p>Continue to attend local NPDES coordination meetings & organize recycling events.</p>

Annual Evaluation Statement: Public Participation / Involvement

For the reporting year, the Village met the requirements of the Public Participation and Involvement section of the NOI. The meetings every other month of the MS4 workgroup were held and various recycling programs were available throughout the year.

ILLICIT DISCHARGE DETECTION AND ELIMINATION

BMP C.1 – Sewer Map Preparation

B. Compliance with Permit Conditions	<p>The Village maintains a GIS database of Village storm sewers and outfalls. The map is continually updated to reflect new development within the Village limits. Stormwater infrastructure is being added to the Village GIS database and will be completed in a few months.</p>
C. Information Collected and Analyzed	N/A
D. Activities for Next Reporting Cycle	<p>Continue revisions to the storm sewer map as necessary.</p>

BMP C.6 – Program Evaluation and Assessment

B. Compliance with Permit Conditions	<p>The Village includes language in the Storm Water Ordinance that prohibits non-stormwater discharges to the storm sewer system. Citizen complaints regarding non-stormwater discharges are received at Village Hall and Public Works. Complaints are reviewed and followed up as they are received during the year.</p>
C. Information Collected and Analyzed	<p>No citizen complaints regarding non-stormwater discharges were received.</p>
D. Activities for Next Reporting Cycle	<p>Continue system for receiving citizen complaints and follow up on non-stormwater/illicit discharges.</p>

BMP C.7 – Visual Dry Weather Screening

B. Compliance with Permit Conditions	The Village includes language in the Storm Water Ordinance that prohibits non-storm water discharges to the storm sewer system. A screening, inspection and follow-up program to identify non-storm water discharges and illicit discharges. 10%-15% of mapped outfalls were selected for dry weather screening, based on potential for illicit discharges. These outfalls are inspected during dry weather up to three times per year. The Village inspects 25% of the municipality's detention basins per year. The most common maintenance issues will be summarized. Knowing common issues may direct future training/education. Inspection reports are maintained and encountered discharges are investigated and eliminated. See Exhibit H for reports on the visual dry weather monitoring that was performed.
C. Information Collected and Analyzed	Twenty stormwater retention/detention facilities were inspected during the reporting year. Minor maintenance items were noted and corrected; all facilities were compliant at the time of inspection.
D. Activities for Next Reporting Cycle	Continue to monitor storm sewer outfalls up to three times per year. Continue annual inspection of 25% of stormwater detention/retention facilities.

Annual Evaluation Statement: Illicit Discharge Detection and Elimination

For the reporting year, the Village met the requirements of the Illicit Discharge Detection and Elimination section of the NOI. The storm sewer map was maintained and expanded, citizen complaints were collected and followed up on, and visual dry weather monitoring was performed by Village staff during the year.

CONSTRUCTION SITE RUNOFF CONTROL

BMP D.1 – Regulatory Control Program

B. Compliance with Permit Conditions	The Village's Storm Water Management ordinance was enforced by providing site plan and subdivision plan reviews. The Ordinance sets forth the requirements for the issuance of Land Disturbance Permits, requirements for Construction Site Storm Water discharges, preparation of Storm Water Pollution Prevention Plans, and associated subjects.
C. Information Collected and Analyzed	Eleven (11) land disturbance permits were issued through the Village.
D. Activities for Next Reporting Cycle	Continued site plan reviews for compliance with local erosion and sediment control rules. Continue to evaluate the need for Stormwater Ordinance Revisions and recommend revisions.

2. BMP D.2 – Erosion and Sediment Control BMPs

B. Compliance with Permit Conditions	The Village provided reviews of the erosion control plans and SWPPPs within the Village limits. The Village provided technical review of erosion control plans and associated SWPPPs and provided comments to the developers.
--------------------------------------	---

C. Information Collected and Analyzed	Six (6) site plans required review during the reporting period.
D. Activities for Next Reporting Cycle	Continue site plan reviews by the Village for compliance with local erosion and sediment control rules.

BMP D.4 – Site Plan Review Procedures

B. Compliance with Permit Conditions	The Village provided reviews of the erosion control plans and SWPPPs within the Village limits. The Village provided technical review of the erosion control plans and associated SWPPPs and provided comments to the developer.
C. Information Collected and Analyzed	Six (6) site plans required review during the reporting period.
D. Activities for Next Reporting Cycle	Continue site plan reviews by the Village for compliance with local erosion and sediment control rules.

BMP D.5 – Public Information Handling Procedures

B. Compliance with Permit Conditions	The phone number for the Village Hall is available on the website for the general public to report storm water issues on active construction sites. Complaints were forwarded to Public Works, investigated and managed appropriately.
C. Information Collected and Analyzed	No citizen complaints regarding non-stormwater discharges were received.
D. Activities for Next Reporting Cycle	Continue to track and report complaints.

BMP D.6 – Site Inspection/Enforcement Procedures

B. Compliance with Permit Conditions	Village staff was responsible for enforcement of the storm water requirements during site construction.
C. Information Collected and Analyzed	Eleven (11) land disturbance permits were issued through the Village. Thirteen (13) site inspections were performed by Village staff.
D. Activities for Next Reporting Cycle	Continue to conduct site inspections for developments subject to ILR10 and perform follow-ups, as necessary.

Annual Evaluation Statement: Construction Site Runoff Control

For the reporting year, the Village met the requirements of the Construction Site Runoff Control section of the NOI. The pre-construction reviews and support was provided, citizen complaints were collected and followed up on, and site inspections during construction were performed by Village staff during the year.

POST-CONSTRUCTION RUNOFF CONTROL

BMP E.2 – Regulatory Control Program

B. Compliance with Permit Conditions	The Village’s Storm Water Management ordinance was enforced pertaining to the design, installation and maintenance of post-construction water quality BMPs in accordance with the most current Illinois Urban Manual Standards.
C. Information Collected and Analyzed	N/A
D. Activities for Next Reporting Cycle	Continue to enforce storm water management technical guidelines as set forth in the Illinois Urban Manual. The Village will evaluate the need for Stormwater Ordinance Revisions and recommend revisions.

BMP E.4 – Pre-Construction Review of BMP Designs

B. Compliance with Permit Conditions	The Village provides commercial site plan reviews and subdivision plan reviews using a consultant for compliance with local erosion and sediment control requirements.
C. Information Collected and Analyzed	Six (6) site plans required review during the reporting period.
D. Activities for Next Reporting Cycle	Continue site plan reviews by the Village for compliance with local erosion and sediment control rules and continue to enforce storm water regulations.

BMP E.5 – Site Inspections during Construction

B. Compliance with Permit Conditions	The Village staff provided onsite inspections during active construction and was responsible for follow-up enforcement of the storm water requirements.
C. Information Collected and Analyzed	Thirteen (13) site inspections were performed by Village staff.
D. Activities for Next Reporting Cycle	Continue site inspections by Village staff of construction sites.

BMP E.6 – Post-Construction Inspections

B. Compliance with Permit Conditions	Village staff are responsible for post-construction monitoring of stormwater outfall structures and retention/detention facilities. See Exhibit H for the inspection reports.
C. Information Collected and Analyzed	Twenty stormwater retention/detention facilities were inspected during the reporting year. Minor maintenance items were noted and corrected; all facilities were compliant at the time of inspection.
D. Activities for Next Reporting Cycle	Continue evaluation of existing operation and maintenance policies and amend as necessary.

Annual Evaluation Statement

For the reporting year, the Village met the requirements of the Post-Construction Runoff Control section of the NOI. The pre-construction reviews were provided, site inspections during construction were performed, and post-construction inspections were completed by Village staff during the year.

POLLUTION PREVENTION / GOOD HOUSEKEEPING

BMP F.1 – Employee Training Program

B. Compliance with Permit Conditions	The Village organized Stormwater Training on February 9, 2023. A copy of the sign-in sheet is available in Exhibit I.
C. Information Collected and Analyzed	N/A
D. Activities for Next Reporting Cycle	Continue employee training program.

BMP F.3 – Municipal Operations Storm Water Control

B. Compliance with Permit Conditions	The Village continued the practice of washing their vehicles in closed facilities that drain to sanitary sewers.
C. Information Collected and Analyzed	N/A
D. Activities for Next Reporting Cycle	Continue to enforce the use of the designated wash facilities.

BMP F.6 – Other Municipal Operations Control

B. Compliance with Permit Conditions	The Village continued to use salt application devices to regulate salt applied to roads for snow removal. The Village continued to store salt in a covered facility. Catch basins were cleaned by Tele Scan in November 2022. Streets were swept in April and December 2022.
C. Information Collected and Analyzed	N/A
D. Activities for Next Reporting Cycle	Continue salt storage and application reduction measures, street sweepings, and catch basin/inlet cleaning.

Annual Evaluation Statement: Pollution Prevention / Good Housekeeping (Section F)

For the reporting year, the Village met the requirements of the Pollution Prevention and Good House Keeping section of the NOI. Employee training continued as well as various municipal operations to control pollution were enacted by Village staff during the year.

E. PERMIT OBLIGATIONS PERFORMED BY ANOTHER ENTITY

The Village of Mt. Zion along with Macon County, the Village of Forsyth and the City of Decatur has contracted with the Macon County Soil and Water Conservation District (MCSWCD) for assistance with educational and public outreach portions of the permit.

F. CONSTRUCTION PROJECTS (BY VILLAGE) DURING REPORTING PERIOD

The following projects in the Village of Mt. Zion disturbed one or more acres for the reporting year:

- None

G. Monitoring Program

The Village completes a visual observation at least once annually at two locations on Finley Creek, one upstream where the creek enters the Village and one where the creek exits the Village. See Exhibit J for the reports. A summary of the monitoring is as follows:

Location #1

Year	Worst Weather in past 48 hours	Temperature Air/Water	Water Appearance	Turbidity	Velocity	Discharge
3/30/2023	Overcast	62/42 °F	Clear	Clear	1.00 ft/sec	38.30 ft ³ /sec

Location #2

Year	Worst Weather in past 48 hours	Temperature Air/Water	Water Appearance	Turbidity	Velocity	Discharge
3/30/2023	Overcast	62/42 °F	Dark Brown/Green	Medium	0.76 ft/sec	32.9 ft ³ /sec

Best Management Practices for Individual Lot Construction

Correctly installed and maintained BMP's can help ensure that sediment generated from construction activity remains on-site. The following BMP's are commonly used for individual lot construction:

Construction Entrance

- Use to prevent tracking soil onto road
- Use 2"-3" stone, 6" deep
- Install during clearing phase and maintain throughout construction
- Install geotextile fabric under entrance



Rock Outlet Protection

- Use to dissipate energy from concentrated flows
- Helps prevent eroded channels downstream
- Use oversized stone appropriate for design velocities
- Install geotextile fabric under riprap



Sediment Barriers

- Use to trap sediment and intercept runoff
- Install prior to clearing phase
- Ensure silt fence is installed correctly by trenching a portion of it in the ground and place stakes on the downhill side
- Maintain until vegetation is established; keep it upright and remove collected sediment
- Do not use on steep slopes or concentrated flow areas



Sediment Cleanup

- At the end of each work day sweep or scrape soil tracked onto roads
- After storm events inspect for off-site sediment movement and repair damage to barriers
- Remove sediment that penetrated barriers and remove build-up



Inlet Protection

- Protect all stormwater inlets- they are a direct conveyance to streams and rivers
- Install prior to clearing phase
- Filter fabric and temporary seeding are standard for inlet protection

Stockpile Placement and Protection

- Build stockpiles away from critical areas such as streams, drainage ways, and stormwater inlets
- Use temporary seed, such as rye or winter wheat, to stabilize pile until removed or re-graded



Re-vegetation/ Surface Protection

- Try to preserve existing trees, shrubs, and other vegetation when possible
- Use to stabilize exposed surfaces from erosion
- Use seed or sod to cover exposed soils after final grade is completed
- Seed critical areas such as drainage swales, right-to-way areas, areas near curb inlets, buffer areas along streams and wetlands
- Mulching can be used when temporary seeding is not practical and can be done in any weather situation



“All the water that will ever be is right now”

Why do we care about Erosion from Construction Sites?

Sediment is the number one pollutant that flows from construction sites. It degrades water quality and can harm our water supply.

Macon County, the City of Decatur, the Village of Forsyth, and the Village of Mt. Zion are working together to do their part in protecting and improving water quality.

This brochure is designed to be a quick reference to some commonly used Best Management Practices to prevent erosion.

Failure to install BMP's could bring about costly fines, stop work orders, and expensive clean ups.



Who Should I Contact?


City of Decatur
Mary Cave 217-424-2724


Macon County
Jennifer Hoffman 217-425-6583


Village of Forsyth
Larry Coloni 217-433-9597


Village of Mt. Zion
Grant Corum 217-864-4811

For Inspections:
In Macon County: 217-425-6583
Decatur, Forsyth, & Mt. Zion:
Macon County Soil and Water
Conservation District
217-877-5670 Ext 3

EROSION & SEDIMENT CONTROL TIPS FOR INDIVIDUAL LOT CONSTRUCTION

www.maconcleanwater.org



A collaborative effort of the Macon County MS4 Communities
EXHIBIT A

What is Green Infrastructure?

Green Infrastructure is a network for solving urban and climatic challenges by building with nature. The main components are stormwater management, climate adaptation, less stress heat, better air quality, and clean water and healthy soils. It also serves to provide an ecological framework for social, economical, and environmental health of the surroundings.

Rain Gardens

Rain Gardens are landscaped areas built in a depression that are designed to capture and filter stormwater runoff from a roof or other impervious surface. The plants and soil of the rain garden provide an easy, natural way of reducing the amount of stormwater runoff from individual residential properties.

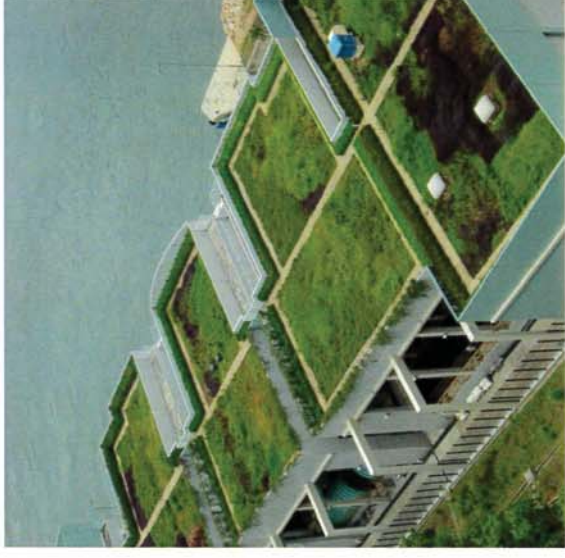
Pervious Pavement

Pervious pavement may include paving blocks, grid pavers, or pervious concrete installed according to manufacturer's specifications. Pervious pavement can be used for driveways and patios with a stone reservoir underneath. The reservoir temporarily stores surface runoff before infiltrating it into the soil below the stone reservoir. Runoff is infiltrated directly into the soil and improves water quality.



Green Roofs

A green roof is a roof that is partially or completely covered with vegetation and waterproofing membrane. A green roof's purpose is to absorb rainwater, provide insulation, create habitat for wildlife, and help lower urban air temperatures.



Bioswales

Bioswales are storm water runoff conveyance systems that provide an alternative to storm sewers. They can absorb low flows or carry runoff from heavy rains to storm sewer inlets or directly to surface waters. Bioswales improve water quality by infiltrating the first flush of storm water runoff and filtering the large storm flows they convey. The majority of annual precipitation comes from frequent, small rain events. Much of the value of bioswales comes from infiltrating and filtering nearly all of this water.



Who should I contact if I want to know more about these practices?

City of Decatur
217-424-2724

Macon County
217-425-6583

Village of Forsyth
217-433-9597

Village of Mt. Zion
217-864-4811

Green Infrastructure



*Prepared by: Macon County
Municipal Separate Storm
Sewer System (MS4)
Communities*

Basics of Water Pollution

Point Source Water Pollution

This is pollution that flows from pipes or comes from specific points such as an industrial site. This type of pollution is regulated by State laws.

Non-Point Source Water Pollution

This type of pollution results from land runoff, precipitation, atmospheric deposition, drainage and seepage. This pollutant is caused by rainfall and snowmelt moving over the ground. This activity collects pollutants and chemicals which are deposited into various creeks, lakes and water sources. This type of pollutant is not closely regulated but can be prevented by education.

Be The Solution to Storm Water Pollution

How Can You Make A Difference?

Household Chemicals

Problem: Many people do not know where to dispose of chemicals from the home.

Solution: Take all household chemicals to collection sites on specified days. Please see Macon County Environmental Agency website for additional information and the specific collection dates. www.macongreen.com

Yard and Garden

Problem: Many homeowners over fertilize their yard because they enjoy the look of a green yard.

Solution: Do not over fertilize your yard. Always follow the manufacturer's recommendations.

Do not apply when rain is in the forecast. Not only is it a waste of time and money, but the chemicals easily wash away in the runoff after a storm.

Do choose natural fertilizers such as compost or grass clippings.

Pet Waste

Problem: Many people allow their pet's waste to wash down the storm drain.

Solution: Pick up pet's waste when going for walks.

Auto Maintenance

Problem: Many people are not careful when performing routine maintenance on their vehicles.

Solution: Do not dump motor oil or fluids down a storm drain.

Do not clean up fluid spills with water. Other alternatives for clean up is kitty litter, sawdust, or wood chips to soak up the spill.

Do take your vehicle to the car wash so the soap and dirt is properly disposed of.

Do properly dispose of all motor oil and fluids properly. Many oil change shops will take used oil at no charge.



Mission Statement for Municipal Separate Storm Sewer System

Our Municipal Separate Storm Sewer System (MS4) purpose is to protect, maintain, and enhance the environment of the jurisdictions and the public health, safety, and welfare of the citizens by controlling discharges of pollutants to the storm water system, by maintaining and improving the quality of the receiving waters into which the storm water outfalls flow, including without limitation lakes, rivers, streams, ponds, wetlands, and groundwater, and to enable compliance with the National Pollution Discharge Elimination System permit (NPDES) and applicable regulations for storm water discharges.



Web Sites for More Information:

www.maconcleanwater.com

Contact:

City of Decatur 424-2747

Macon County 424-1466

Village of Forsyth 877-9445

Village of Mt. Zion 864-4811



**WHEN IT
RAINS.....
IT DRAINS**

**BE THE SOLUTION TO
STORMWATER POLLUTION**

STORMWATER WORKSHOP

A G E N D A

7:30 a.m.—12:30 p.m.

Wednesday, November 2, 2022

7:30 A.M. Breakfast and Registration

8:00 A.M. Patrick McPartlan, Kane-DuPage SWCD, CPESC / Resource Conservationist

INTRODUCTION TO GOOD AND BAD STORMWATER BEST MANAGEMENT PRACTICES

8:45 A.M. Becky Monreal, Kane-DuPage SWCD / Resource Analyst

ILLINOIS URBAN MANUAL

9:30 A.M. Todd Bennett, Illinois EPA Manager Field Operations Section Bureau of Water Division of Water Pollution and Control

WHATS NEW — REGULATION, PERMITTING ILR-10 UPDATES

10:15 A.M. Break

10:30 A.M. Todd Bennett, Illinois EPA Manager Field Operations Section Bureau of Water Division of Water Pollution and Control

WHAT TO EXPECT FORM AN IEPA SITE INSPECTION

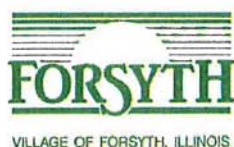
11:30 A.M. Kate Johnson, USEPA Water Infrastructure Coordinator, U.S. Environmental Protection Agency Region 5

EPA'S WATER INFRASTRUCTURE FINANCING OPPORTUNITIES

PDH Credit Certificate will be available on our website November 3.

www.maconcleanwater.com

Brought to you by the MS4 Work Group of Macon County, including:



STORMWATER WORKSHOP

for Contractors, Engineers,
Public Works and Elected Officials

7:30 a.m.—12:30 p.m.

Wednesday, November 2, 2022

Richland College Shilling Center

1 College Park, Decatur IL 62521

[Register at EVENTBRITE LINK HERE](#)

*** CREDIT HOURS AVAILABLE ***



AGENDA

7:30 A.M. Breakfast and Registration

8:00 A.M. Patrick McPartlan, CPESC/RC Kane-DuPage SWCD

"INTRO TO STORMWATER PRACTICES THE GOOD AND BAD BEST MANAGEMENT PRACTICES"

8:45 A.M. Becky Monreal, Kane-DuPage SWCD

ILLINOIS URBAN MANUAL UPDATES

9:30 A.M. Todd Bennett, Illinois EPA Manager Field Operations Section Bureau of Water Division of Water Pollution and Control

"WHATS NEW — REGULATION, PERMITTING ILR-10 UPDATES"

10:15 A.M. Break

10:30 A.M. Todd Bennett, Illinois EPA Manager Field Operations Section Bureau of Water Division of Water Pollution and Control

"WHAT TO EXPECT FORM AN IEPA SITE INSPECTION"

11:30 A.M. Kate Johnson, USEPA Water Infrastructure Coordinator,
U.S. Environmental Protection Agency Region 5

"EPA'S WATER INFRASTRUCTURE FINANCING OPPORTUNITIES"

Brought to you by the MS4 Work Group of Macon County, including:



41st Annual Festival of Spring

At Rock Springs Nature Center

An Earth Day Celebration

Saturday, April 23, 2022 8:00am to 4:00pm

MORNING

BIRD BANDING

8:00am – 10:00am

Information Shelter north of parking lot

Dr. Travis Wilcoxon, from Millikin University, will host a bird banding event in the area near the pavilions. Learn about banding and see local song birds in person and up close.

SPRING MIGRATION WALK

9:00am – 10:00am

Information shelter, north of the parking lot

Join us for a walk on the trails in search of early spring migrants as well as birds who are in Central Illinois year round. Spring is a wonderful time to discover new birds. Bring your own binoculars or borrow ours.

SANGAMON RIVER CLEAN UP

10:00am-12:00pm, Registration at 9:30am

Meet at the Wyckles Road Canoe Launch

Clean Up Event – Organized groups should call in advance so we can accommodate the size of your group: 217-423-7708. Co-sponsored by Community Environmental Council and Macon County Conservation District

AFTERNOON

BIRDS OF PREY SHOWS – Rock Springs Nature Center

Greenberg Auditorium

12:00pm, 1:30pm, or 3:00pm.

Learn about and meet these predatory birds of prey with the Illinois Raptor Center. You can also watch LIVE at 1:30pm on the Conservation District's Facebook page. Provided by Decatur Audubon.

WONDERFUL WILDFLOWERS WALK

1:00am – 2:00am

Meet at the Information Shelter

Enjoy a leisurely walk in the woods to discover early spring flowers.

EARTH DAY CELEBRATION HIKE

2:30pm - 3:30pm

Meet at the Information shelter

Enjoy a hike to celebrate nature and our amazing home planet. There is always something to discover.

BOOK EXCHANGE

12:00pm - until books are gone

Information Shelter Area

Bring books to exchange. No books to trade? Just leave a small donation for the books you take.

MISTER SOFTEE ICE CREAM

3:00pm. to 4:00pm

WAGON RIDES

12:00pm - 3:30pm - first come, first served

Meet at Nature Center South Entrance

Enjoy a tour around the area in style! Free

Celebrate Spring with us!

MORE ON THE BACK

Festival of Spring

AFTERNOON 12pm – 4pm



TICKETS TO TREASURES FOR KIDS

Nature Center East Entry

Kids ages 12 and under - get a ticket and have it marked at events marked by the star. ★
Children will be awarded prizes when they turn in their tickets.

NATIVE GARDEN TOURS

Nature Center East Entry

Native plants are very important to wildlife. Learn about native plants which would be great for your garden.

NEW ECOCENTER

East Wing of Nature Center ★

Visit the new exhibits to learn about conservation and how you can help.

EXHIBITS AND ART

Nature Center

North Wing Exhibit Hall - Marvelous Milky Way

North Hall—K Unruh Artwork

South Hall—Jane P. Koenig Nature Photography

PAINT NATURE WITH NATURE

Pond Pavilion For all ages. Use nature's palette: flowers, leaves, stems, and even charcoal to paint a nature scene. Provided by Decatur Audubon ★

PLANT A SEED, WATCH IT GROW

Information Shelter Area ★

Master Gardeners will help children plant their own seeds to take home and grow.

CANOE RODEO

Cattail Ponds - East of Picnic Area

Learn the basics of canoeing. Register and pay fee at Cattail Ponds. Recommended for adults and children ages 5 and up. All children must be accompanied by an adult. **FEE: \$3 per person**

RESTORATION STATION

Picnic Area ★

Come check out the equipment used by the Macon County Conservation District's Natural Resources Department. Learn how to make an impact by joining the Conservation District's volunteer restoration team.

OPEN HOUSE AT HOMESTEAD PRAIRIE FARM

At Homestead Prairie Farm

Tour the homestead and learn how people lived and survived in earlier days.

HEIRLOOM GARDEN TOURS

At Homestead Prairie Farm ★

Tour the heirloom vegetable and herb gardens at Homestead Prairie Farm. You'll have an opportunity to meet and ask questions of expert Master Gardeners from the University of Illinois.

MERCY GARDENS

Information Shelter Area

Mercy Gardens will have garden plants for sale.

SCAVENGER HUNT

Nature Center West Lawn

Solve the riddles on the Discovery Trail.

SPECIAL EXHIBITS AND BOOTHS

Information Shelter/Picnic Area ★

- Decatur Audubon & Plants for Birds
- Macon County Conservation District Summer Camp Information
- Glacier's Edge Master Naturalist
- Macon County Soil and Water Conservation District & MS4 Storm Water Safety
- Community Environmental Council
- Friends of Lincoln Trail Homestead State Park
- Bright Start
- Children's Museum of Illinois
- Decatur Garden Club
- Boy Scouts of America
- Girl Scouts of the USA

CHILDREN'S ACTIVITY PACKETS

Browse information about local organizations that work to benefit habitat, water, and wildlife. Each organization will have take-home activity packets for children. Available first-come, first-served.

*Co-sponsored by Decatur Audubon and
Macon County Conservation District*

SATURDAY, JUNE 11, 2022

SPARKLE & Shine

On Saturday, June 11th, 2022, the Village of Mt. Zion, in partnership with Waste Management, will host a one-day curbside pick-up for large items.

Just place **ACCEPTABLE** items on the curb by 6:00 am on Saturday, June 11th, and they will be picked-up free of charge.

THERE WILL NOT BE A DROP-OFF LOCATION. FOR DETAILS ON ACCEPTABLE ITEMS, PLEASE VISIT WWW.MTZION.COM/CALENDAR-OF-EVENTS OR CALL (217) 864-5424.



UNACCEPTED ITEMS:

- CHEMICALS
- PAINT
- TIRES
- HOUSEHOLD GARBAGE
- FENCING OR WIRE
- TELEVISION OR ELECTRONICS
- YARD WASTE



For items not accepted, visit www.maconggreen.com for a list of disposal options.

SPARKLE & Shine



THE CLEANUP IS FOR HOME GENERATED ITEMS (FURNITURE, BEDDING,
LARGE ACCUMULATIONS OF TRASH, CLOTHING, ETC.)

MATERIAL MUST BE READY FOR COLLECTION BY 6:00 AM

UNACCEPTED ITEMS:

- YARD WASTE
- LIQUID WASTE
- PAINT
- MOTOR OIL
- THINNER
- HAZARDOUS WASTES
- GASOLINE
- CHEMICAL WASTES
- INSECTICIDES
- PESTICIDES
- ELECTRONICS
- TVS
- COMPUTERS
- TIRES
- BATTERIES
- LARGE AUTO PARTS
- CONSTRUCTION/
DEMOLITION DEBRIS
& CONCRETE
- APPLIANCES WITHOUT
FREON



For items not accepted, visit
www.macongreen.com for a list of disposal
options.

Spring/Fall 2022 EVENTS SCHEDULE

Unwanted TV's and select consumer video devices, gaming systems and home office electronic items may be dropped off for recycling by **APPOINTMENT ONLY** on:

Saturday, April 23, 2022

Saturday, May 21, 2022

Saturday, June 25, 2022

Saturday, July 23, 2022

Saturday, August 27, 2022

Saturday, September 24, 2022



UP TO SEVEN TVS/ MONITORS WILL BE ACCEPTED AT THE COST OF \$10 EACH .

Household-generated paint, stain and varnish will be accepted by **APPOINTMENT ONLY** on:

Saturday, April 2, 2022

Saturday, May 7, 2022

Saturday, June 11, 2022

Saturday, July 9, 2022

Saturday, August 13, 2022

Saturday, September 10, 2022



THIS IS A FREE EVENT FOR THOSE WHO REGISTER FOR AN APPOINTMENT.

PLEASE NOTE: ACCEPTED PRODUCTS MUST BE IN LABELED, ORIGINAL CONTAINERS.

EMPTY CANS/ DRIED PAINT SHOULD BE DISPOSED IN HOUSEHOLD TRASH. WE DO NOT ACCEPT SPRAY PAINT.

Macon County Environmental Management's Spring events will be held at the Recycling Center located at 1750 N. 21st St., Decatur

To register for a collection event or for more information:

Visit www.MaconGreen.com, or call 217/425-4505





Basin Number	Location	Use Type	Basin Type	Contact	Date Inspected	Action Needed	Inspection Notes	Reinspection Date
A-1	4220 South Lake Court	Residential	Wet	HOA/Mosser				
A-2	4120 Meadow Park Drive	Residential	Wet	HOA/Mosser				
A-3	1110 Meadow Court	Residential	Wet	HOA/Mosser				
A-4	2580 Lake Reunion Pkwy.	Residential	Wet	HOA/Mosser				
A-5	600 Southbrooke Drive	Residential	Wet	Unknown	7-18-22	None		
A-6	500 Southbrooke Drive	Residential	Wet	Unknown				
A-7	400 Southbrooke Drive	Residential	Wet	Unknown				
A-8	2235 Buckhead Lane	Residential	Wet	HOA	7-18-22	None		
A-9	1605 Hunter's Pointe Court	Residential	Dry	Village of Mt. Zion				
A-10	1635 Baltimore Ave.	Commercial	Dry	The Glenwood				
A-11	205 Covington Ave.	Residential	Dry	HOA/S A Lewis				
A-12	5620 Traughber Road	Residential	Wet	Unknown				
A-13	1340 Silver Leaf Court	Residential	Wet	HOA/S A Lewis				
A-14	1480 Silver Leaf Ave.	Residential	Wet	Steve Lewis				
A-15	3659 Sulphur Springs Road	Residential	Wet	David Sheets				
A-16	3795 Sulphur Springs Road	Residential	Wet	David Clem				

Basin Number	Location	Use Type	Basin Type	Contact	Date Inspected	Action Needed	Inspection Notes	Reinspection Date
B-1	14 Buttonridge Place	Residential	Wet	HOA/S A Lewis				
B-2	685 Country Court	Residential	Dry	HOA	7-18-22	NONE		
B-3	1320 West Main Street	School	Dry	Mt. Zion School District				
B-4	885 West Main Street	Residential	Wet	Britt Brown				
B-5	190 Carrington Ave.	Residential	Wet	HOA/S A Lewis	7-18-22	NONE		
B-6	665 Elm Street	Residential	Wet	Linnea Harris				

Basin Number	Location	Use Type	Basin Type	Contact	Date Inspected	Action Needed	Inspection Notes	Reinspection Date
C-1	400 N. Whitetail Circle	Commercial	Dry	Holy Spirit Church	5-17-22	outlet cleaned out		
C-2	1015 N. State Highway 121	Commercial	Dry	Creek's Florist				
C-3	505 Broadway Street	Commercial	Dry	American Family Insurance	5-17-22	NONE		
C-4	505 Sunset Court	Commercial	Dry	Hagerman & Company	5-17-22	NONE		
C-5	330 Broadway Street	Commercial	Dry	Pat Penhallegon	5-17-22	NONE		
C-6	115 West Main Street	Library	Dry	Mt. Zion Public Library	5-17-22	NONE		
C-7	105 West Main Street	Commercial	Dry	Dawson & Wikoff				
C-8	310 South Henderson	School	Dry	Mt. Zion School District	5-17-22	weds cut by outlet		
C-9	455 Elm Street	School	Dry	Mt. Zion School District	5-17-22	weds cut by outlet		
C-10	405 South Henderson Street	Residential	Wet	Cathy Derby	5-17-22	NONE		
C-11	323 Fletcher Park Blvd.	Municipal	Wet	Village of Mt. Zion				

Basin Number	Location	Use Type	Basin Type	Contact	Date Inspected	Action Needed	Inspection Notes	Reinspection Date
D-1	1 Ashland Ave.	Commercial	Dry	Jay McAtee				
D-2	210 Casa Park Drive	Commercial	Dry	Todd Cole				
D-3	1545 August Hill Court	Residential	Wet	HOA/S A Lewis				
D-4	1379 Community Drive	Residential	Dry	HOA/S A Lewis	9-9-22	None		
D-5	612 Spittler Park Plaza Drive	Residential	Dry	Unknown	9-9-22	Trash cleaned outlet cleaned		
D-6	830 N. State Highway 121	Commercial	Dry	Majestic Bingo Hall				
D-7	620 N. State Highway 121	Residential	Dry	Unknown	9-9-22	weeds		
D-8	600 N. State Highway 121	Residential	Dry	Unknown	9-9-22	weeds		
D-9	775 Pearl Court	Residential	Wet	HOA/S A Lewis				
D-10	620 Linda Court	Residential	Dry	SMA Properties	9-9-22	eroding dirt 5 bags		
D-11	621 Linda Court	Residential	Dry	SMA Properties	9-9-22	None		
D-12	105 Green Valley Drive	Commercial	Dry	Green Valley Manufacturing	9-9-22	None		
D-13	105 Green Valley Drive	Commercial	Dry	Green Valley Manufacturing	9-9-22	None		

Village of Mt. Zion Stormwater Training
2/9/2023

Employee Name (Print)	Employee Signature
J. Anderson	
Brent White	
Noah Ruenger	Noah Ruenger
Wes Unger	Wes Unger
Kerry Toothman	Kerry Toothman
Bill Hutton	BH
chad Reynolds	chad Reynolds



Outfall Monitoring Sheet

Site ID #: R0510301
 Stream: Finley Creek
 Date: 3/30/23

Name(s) of Inspector(s): Luke Kirby
 Start Time: 3 : 00 am pm End Time: 3 : 30 am pm

Present Weather <input checked="" type="checkbox"/> Clear/Sunny <input type="checkbox"/> Overcast <input type="checkbox"/> Showers (Intermittent) <input type="checkbox"/> Rainy (Steady) <input type="checkbox"/> Stormy (Heavy)	Worst Weather in past 48 hours <input type="checkbox"/> Clear/Sunny <input checked="" type="checkbox"/> Overcast <input type="checkbox"/> Showers (Intermittent) <input type="checkbox"/> Rain (Steady) <input type="checkbox"/> Storm (Heavy)	Temperature Air <u>62</u> <input checked="" type="radio"/> °F °C Water <u>42</u> <input checked="" type="radio"/> °F °C
Water Appearance <input checked="" type="checkbox"/> Clear <input type="checkbox"/> Milky <input type="checkbox"/> Foamy <input type="checkbox"/> Dark Brown <input type="checkbox"/> Oily Sheen <input type="checkbox"/> Reddish <input type="checkbox"/> Green <input type="checkbox"/> Other _____	Water Odor <input checked="" type="checkbox"/> None <input type="checkbox"/> Sewage <input type="checkbox"/> Chlorine <input type="checkbox"/> Fishy <input type="checkbox"/> Rotten Eggs <input type="checkbox"/> Petroleum <input type="checkbox"/> Other _____	Turbidity <input checked="" type="checkbox"/> Clear <input type="checkbox"/> Slight <input type="checkbox"/> Medium <input type="checkbox"/> Heavy

Canopy Cover 0% 1-5% 6-25% 26-50% 51-75% 76-100%
Algal Growth 0% 1-5% 6-25% 26-50% 51-75% 76-100%
Substrate Siltation Coverage: Estimate the percentage of the stream bed that is covered by silt. NOT VISIBLE
 0% 1-5% 6-25% 26-50% 51-75% 76-100%

Are there Submerged Aquatic Plants? Yes No

If yes, what types? _____
 List the types of **riparian (stream side) vegetation** present at the site. Trees, Shrubs

Bottom Substrate: Using the percent codes below, record the percentage of each of the materials that make up the stream bottom by writing the percent code letter in the blank next to the bottom substrate type. If the substrate is not present at the site, write letter A in the blank.

Percent cover codes: A = 0% B = 1-5% C = 6-25% D = 26-50% E = 51-75% F = 76-100%

Bedrock Cobble (2.5 in – 10 in) E Sand (<0.1 in)
 Boulder (> 10 in) Gravel (0.1 in – 2.5 in) D Silt
 Hard Pan Clay Other _____

Stream Discharge Estimate

Stream Width: $\frac{25}{A}$ feet

If you can only record two depth or velocity measurements, please calculate the average by dividing the sum by 2.

If only one measurement is taken, use the single value as the average.

Depth Measurements:

1. $\frac{1.3}{}$ ft
2. $\frac{1.8}{}$ ft
3. $\frac{1.5}{}$ ft

Average Depth = $\frac{1.53}{B}$ feet

Velocity Calculations:

12 ft ÷ seconds = 1.0 ft/sec

12 ft ÷ seconds = 1.1 ft/sec

12 ft ÷ seconds = 0.9 ft/sec

Average Velocity = $\frac{1.0}{C}$ ft/sec

Discharge (width x depth x velocity) $\frac{25}{A}$ ft x $\frac{1.53}{B}$ ft x $\frac{1.0}{C}$ ft/sec = $\frac{38.3}{}$ ft³/sec

Land Uses

Record all visible land uses occurring upstream and on either side of the stream site. Indicate which land uses are **dominant (D)** and which **affect small areas (X)**. If a listed land use is not present, leave blank.

D	Forest (W1)		Logging (W2)		Golf Course (W3)
	Grassland and Ungrazed Field (W4)		Commercial (W6)		Scattered Residential (W7)
X	High-Density Residential/Urban (W8)		Cropland (W9) Type? (W9T)		Sewage Treatment (W10)
	Park (W11)		Mining (W12) Type? (W12T)		Sanitary Landfill (W13)
	Livestock Pasture (W14)		Construction (W15) Type? (W15T)		Industrial (W16)
	Other (W17)				

Please circle YES or NO and provide the necessary information to answer the following questions:

1. **Upstream dam?** (including beaver dams) YES NO
If yes, approximately how far upstream? _____

2. **Wastewater treatment discharge upstream?** YES NO
If yes, approximately how far upstream? _____

3. **Any pipes emptying directly into or near your study site?** YES NO

4. **Channel Alteration.** Has the stream been channelized (straightened) at your site? YES NO
If yes, what percentage of your site has been channelized? _____ %

Habitat Survey Notes (Include sediment odors, appearance, and/or the presence of silt, watershed features present but not listed on this data sheet, and any other information you feel is important or interesting to mention. Attach separate sheet if needed.)



Outfall Monitoring Sheet

Site ID #: R0510301
 Stream: Finley Creek
 Date: 3/30/23

Name(s) of Inspector(s): Luke Kirby
 Start Time: 3 : 40 am pm End Time: 4 : 10 am pm

Present Weather <input checked="" type="checkbox"/> Clear/Sunny <input type="checkbox"/> Overcast <input type="checkbox"/> Showers (Intermittent) <input type="checkbox"/> Rainy (Steady) <input type="checkbox"/> Stormy (Heavy)	Worst Weather in past 48 hours <input type="checkbox"/> Clear/Sunny <input checked="" type="checkbox"/> Overcast <input type="checkbox"/> Showers (Intermittent) <input type="checkbox"/> Rain (Steady) <input type="checkbox"/> Storm (Heavy)	Temperature Air <u>62</u> <input checked="" type="radio"/> °F °C Water <u>42</u> <input checked="" type="radio"/> °F °C
Water Appearance <input type="checkbox"/> Clear <input type="checkbox"/> Milky <input type="checkbox"/> Foamy <input checked="" type="checkbox"/> Dark Brown <input type="checkbox"/> Oily Sheen <input type="checkbox"/> Reddish <input checked="" type="checkbox"/> Green <input type="checkbox"/> Other _____	Water Odor <input checked="" type="checkbox"/> None <input type="checkbox"/> Sewage <input type="checkbox"/> Chlorine <input type="checkbox"/> Fishy <input type="checkbox"/> Rotten Eggs <input type="checkbox"/> Petroleum <input type="checkbox"/> Other _____	Turbidity <input type="checkbox"/> Clear <input type="checkbox"/> Slight <input checked="" type="checkbox"/> Medium <input type="checkbox"/> Heavy

Canopy Cover 0% 1-5% 6-25% 26-50% 51-75% 76-100%
Algal Growth 0% 1-5% 6-25% 26-50% 51-75% 76-100%
Substrate Siltation Coverage: Estimate the percentage of the stream bed that is covered by silt. NOT VISIBLE
 0% 1-5% 6-25% 26-50% 51-75% 76-100%

Are there Submerged Aquatic Plants? Yes No

If yes, what types? _____
 List the types of **riparian (stream side) vegetation** present at the site. Trees, Shrubs

Bottom Substrate: Using the percent codes below, record the percentage of each of the materials that make up the stream bottom by writing the percent code letter in the blank next to the bottom substrate type. If the substrate is not present at the site, write letter A in the blank.

Percent cover codes: A = 0% B = 1-5% C = 6-25% D = 26-50% E = 51-75% F = 76-100%

<input type="checkbox"/> Bedrock	<input type="checkbox"/> Cobble (2.5 in – 10 in)	<input type="checkbox"/> Sand (<0.1 in)
<input type="checkbox"/> Boulder (> 10 in)	<input type="checkbox"/> E Gravel (0.1 in – 2.5 in)	<input checked="" type="checkbox"/> C Silt
<input type="checkbox"/> Hard Pan Clay	<input type="checkbox"/> Other _____	

Stream Discharge Estimate

Stream Width: $\frac{25}{A}$ feet

If you can only record two depth or velocity measurements, please calculate the average by dividing the sum by 2.

If only one measurement is taken, use the single value as the average.

Depth Measurements:

1. $\frac{1.5}{\quad}$ ft
2. $\frac{2.1}{\quad}$ ft
3. $\frac{1.6}{\quad}$ ft

Average Depth = $\frac{1.73}{B}$ feet

Velocity Calculations:

- 12 ft ÷ seconds = 0.4 ft/sec
 12 ft ÷ seconds = 1.1 ft/sec
 12 ft ÷ seconds = 0.8 ft/sec

Average Velocity = $\frac{0.76}{C}$ ft/sec

Discharge (width x depth x velocity) $\frac{25}{A}$ ft x $\frac{1.73}{B}$ ft x $\frac{0.76}{C}$ ft/sec = 32.9 ft³/sec

Land Uses

Record all visible land uses occurring upstream and on either side of the stream site. Indicate which land uses are **dominant (D)** and which **affect small areas (X)**. If a listed land use is not present, leave blank.

D	Forest (W1)		Logging (W2)		Golf Course (W3)
	Grassland and Ungrazed Field (W4)		Commercial (W6)		Scattered Residential (W7)
X	High-Density Residential/Urban (W8)		Cropland (W9) Type? (W9T)		Sewage Treatment (W10)
	Park (W11)		Mining (W12) Type? (W12T)		Sanitary Landfill (W13)
	Livestock Pasture (W14)		Construction (W15) Type? (W15T)		Industrial (W16)
	Other (W17)				

Please circle YES or NO and provide the necessary information to answer the following questions:

1. **Upstream dam?** (including beaver dams) YES NO
 If yes, approximately how far upstream? _____

2. **Wastewater treatment discharge upstream?** YES NO
 If yes, approximately how far upstream? _____

3. **Any pipes emptying directly into or near your study site?** YES NO

4. **Channel Alteration.** Has the stream been channelized (straightened) at your site? YES NO
 If yes, what percentage of your site has been channelized? _____ %

Habitat Survey Notes (Include sediment odors, appearance, and/or the presence of silt, watershed features present but not listed on this data sheet, and any other information you feel is important or interesting to mention. Attach separate sheet if needed.)



Macon County Soil & Water Conservation District
3342 N President Howard Brown Blvd.
Decatur, IL 62521-6207
217-877-5670 Ext 3

May 22, 2023

To whom it may concern,

Macon County Soil and Water has been in contact with Amy Mckinney with Macon County Environmental Management several times over the last month to give the event numbers for the annual MS4 report. Macon County Soil and Water has taken care of the education events for MS4 over the last several years and completed those events for 2022 as well. However, the district has suffered staffing issues over the last 4 months and can not produce the exact numbers for these events. The board of directors has searched the files and computers of the employees that kept these records, and they cannot be found unfortunately. We know the events were completed just are lacking the impact numbers. The district is planning to meet with the MS4 group to make a plan so that we don't have this in the future. Thank you for your understanding and the board hopes to avoid this issue in the future.

Chase Brown

Chase Brown
Chairman of the Board
Macon County Soil and Water

